

MMI with 6 channel digital sound package sound system (9VD)

from model year 2005

Notes:

For information concerning

- ◆ Position of relays and fuses
- ◆ Multi-pin connections
- ◆ Control units and relays
- ◆ Earth connections

→ List of Fitting Locations!

For information concerning

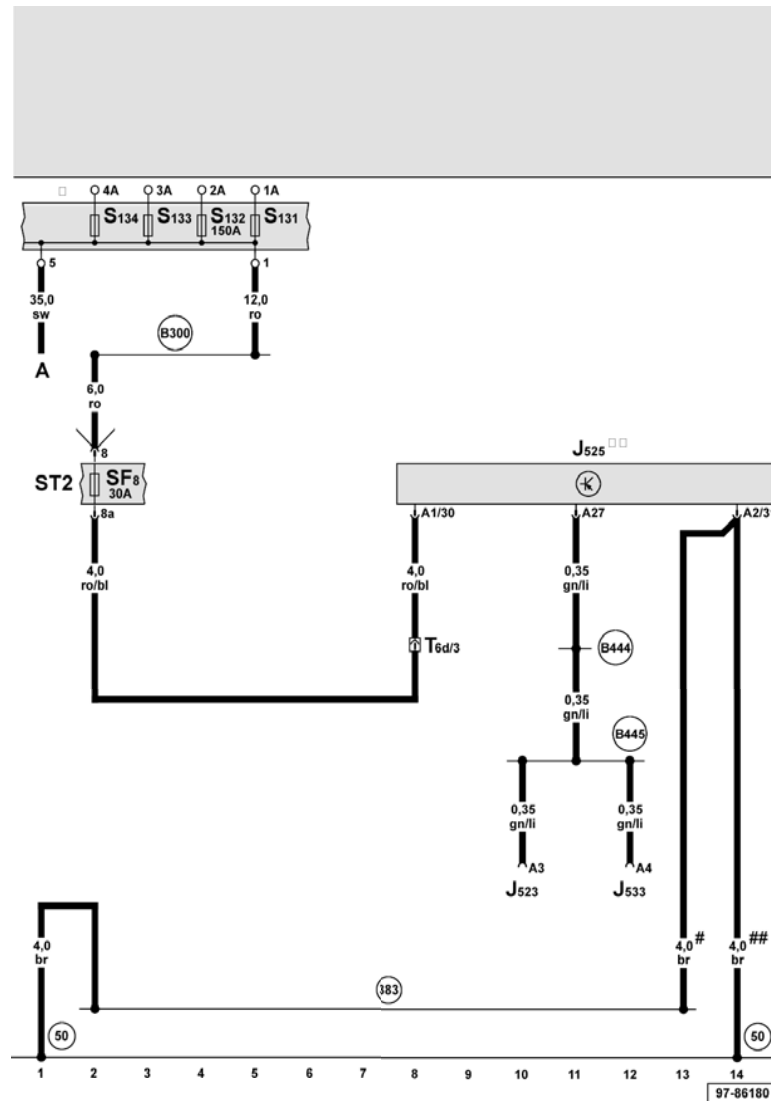
- ◆ Fault Finding Programs

→ guided fault finding

Audi A6

Current Flow Diagram

No. 36 / 2



Digital sound package control unit, fuses

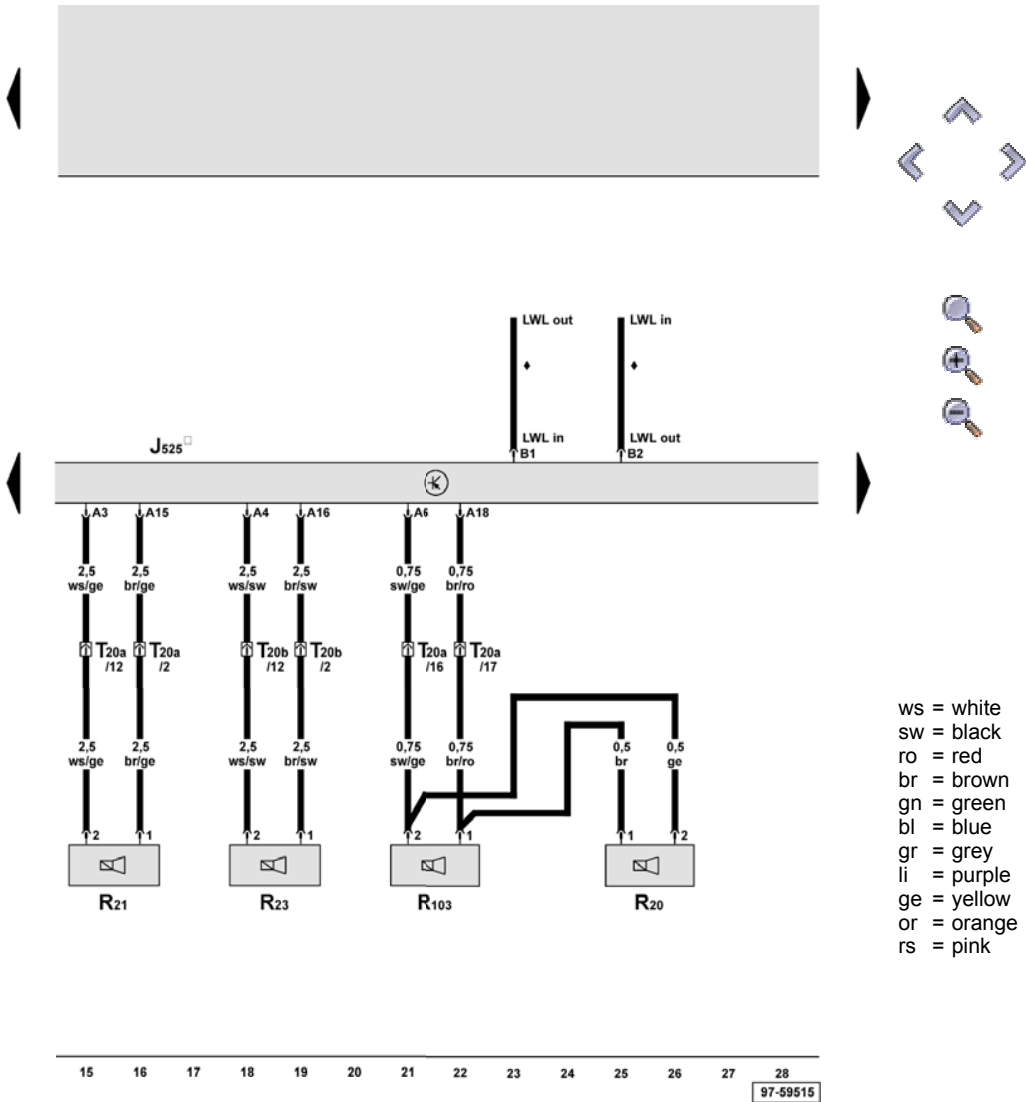
- A - Battery
- J523 - Front information display and operating unit control unit
- J525 - Digital sound package control unit
- J533 - Data bus diagnostic interface
- S131 - Fuse 1
- S132 - Fuse 2
- S133 - Fuse 3
- S134 - Fuse 4
- SF8 - Fuse 8 on fuse holder
- T6d - 6-pin connector, black, on left in luggage compartment
- 50 - Earth point, on left in luggage compartment
- 383 - Earth connection 18, in main wiring harness
- B300 - Positive connection 4 (30), in main wiring harness
- B444 - Connection 1 (diagnosis), in main wiring harness (ring brake diagnosis)
- B445 - Connection 2 (diagnosis), in main wiring harness (ring brake diagnosis)
- * - Fuse and relay carrier right in luggage compartment
- ** - on left in luggage compartment
- # - up to October 2005
- ## - from November 2005

Audi A6

Current Flow Diagram

No. 36 / 3

- Digital sound package control unit, front left bass loudspeaker, front right bass loudspeaker, front left mid-range loudspeaker
- J525 - Digital sound package control unit
 - R20 - Front left treble loudspeaker
 - R21 - Front left bass loudspeaker
 - R23 - Front right bass loudspeaker
 - R103 - Front left mid-range loudspeaker
 - T20a - 20-pin connector, black, left A-pillar
 - T20b - 20-pin connector, black, right A-pillar
 - * - on left in luggage compartment
 - ♦ - Fibre optic conductor, see Current Flow Diagram infotainment data bus (Most Ring)




Audi A6

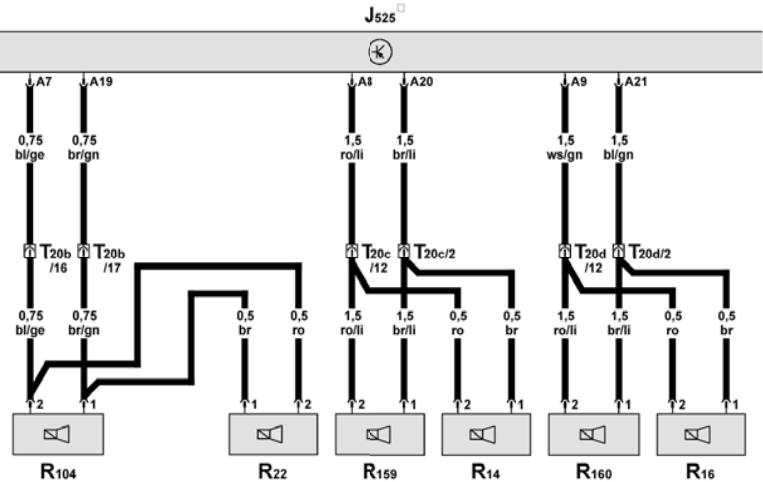
Current Flow Diagram

No. 36 / 4



Digital sound package control unit, front right mid-range loudspeaker, rear left and right mid-range and bass loudspeaker, treble loudspeaker

- J525 - Digital sound package control unit 
- R14 - Rear left treble loudspeaker
- R16 - Rear right treble loudspeaker
- R22 - Front right treble loudspeaker
- R104 - Front right mid-range loudspeaker
- R159 - Rear left mid-range and bass loudspeaker
- R160 - Rear right mid-range and bass loudspeaker
- T20b - 20-pin connector, black, right A-pillar
- T20c - 20-pin connector, black, left B-pillar
- T20d - 20-pin connector, black, right B-pillar
- * - on left in luggage compartment



ws = white
sw = black
ro = red
br = brown
gn = green
bl = blue
gr = grey
li = purple
ge = yellow
or = orange
rs = pink

Audi A6

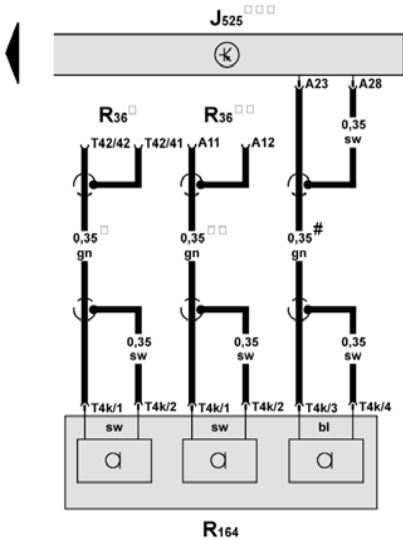
Current Flow Diagram

No. 36 / 5



Digital sound package control unit, microphone unit in front roof module

- J525 - Digital sound package control unit
- R36 - Telephone transmitter and receiver unit
- R164 - Microphone unit in front roof module
- T4k - 4-pin connector, black, microphone connection roof module
- T42 - 42-pin connector, on telephone transmitter and receiver unit
- * - models with microphone
- ** - models with preparation for mobile telephone
- *** - on left in luggage compartment
- # - models with voice control



- ws = white
- sw = black
- ro = red
- br = brown
- gn = green
- bl = blue
- gr = grey
- li = purple
- ge = yellow
- or = orange
- rs = pink