

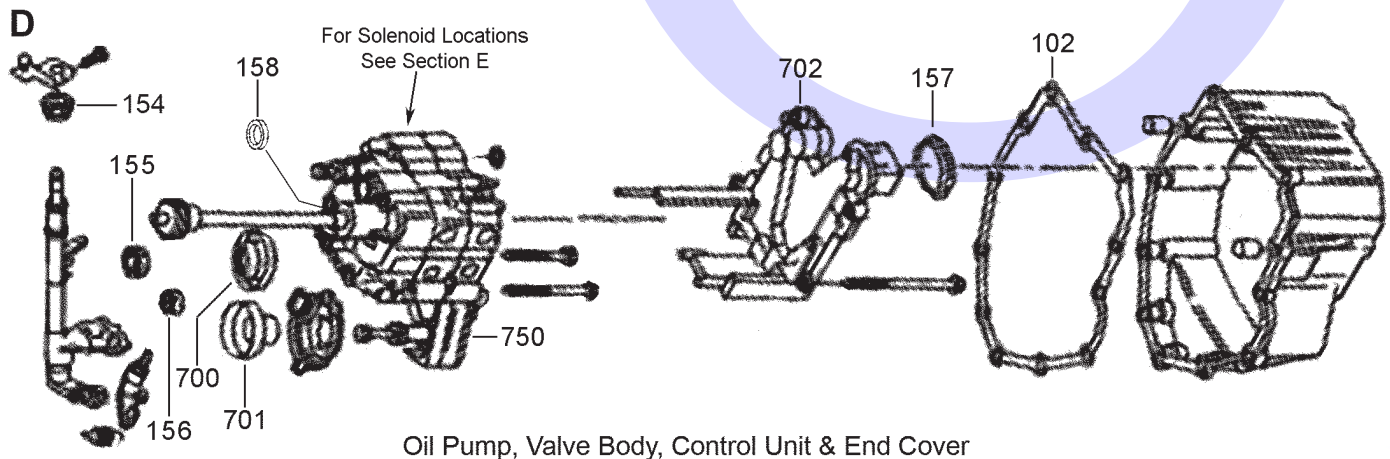
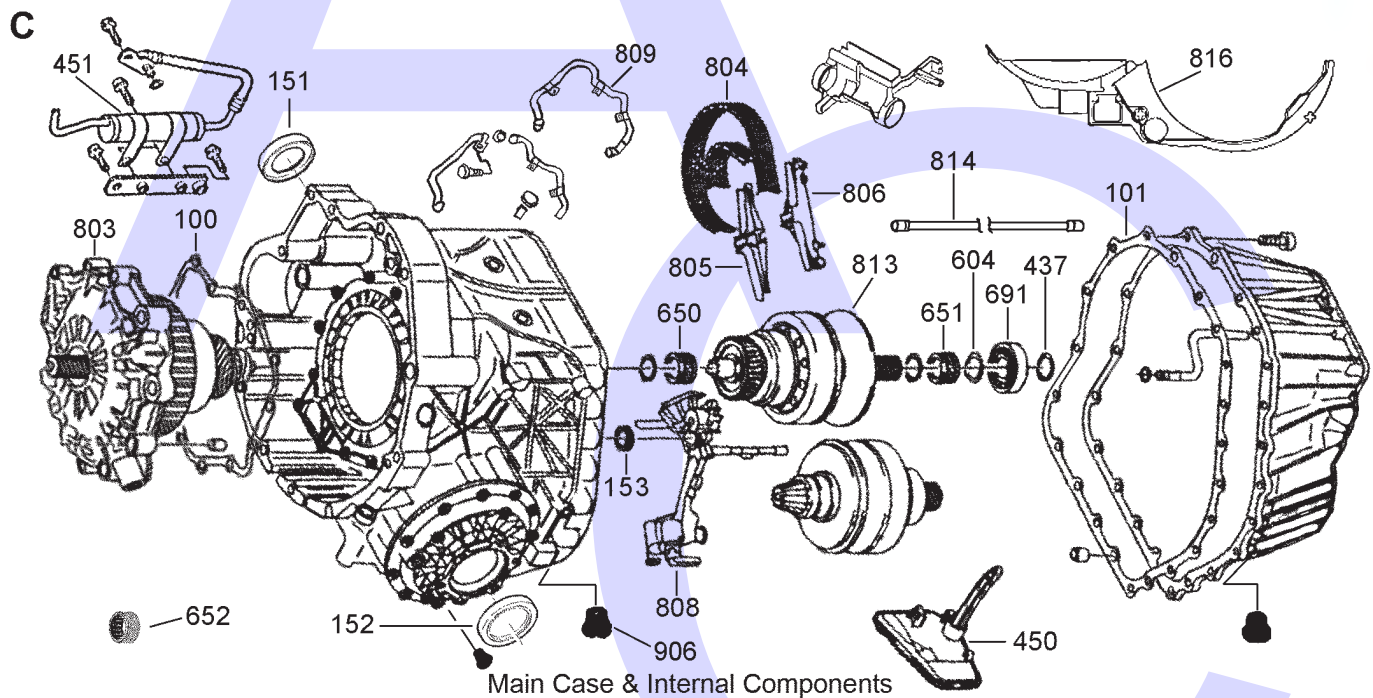
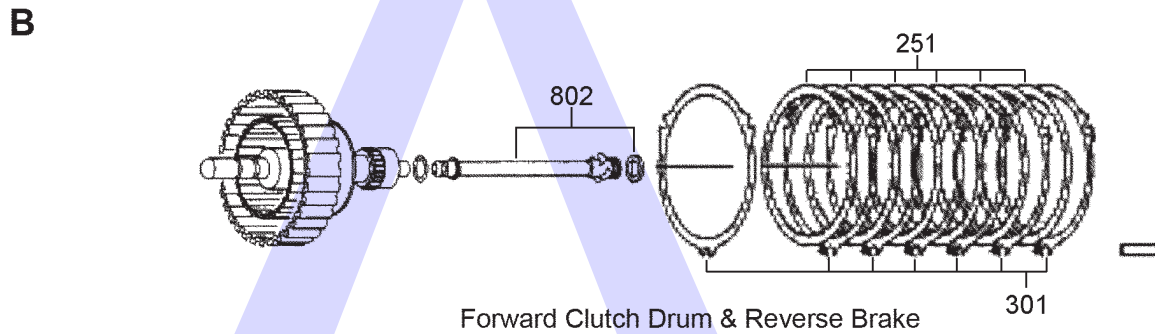
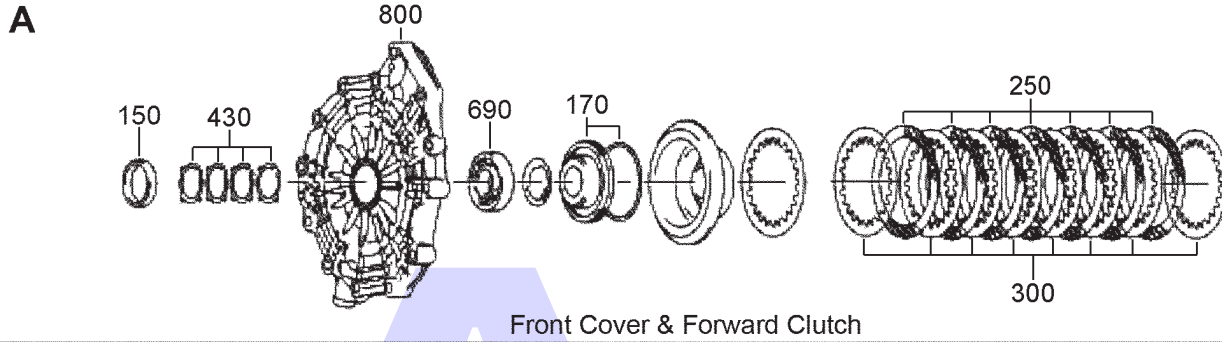
01J & 0AN (Multitronic) In Line FWD CVT (Electronic Control)



AUTOMATIC CHOICE



THE AUTOMATIC TRANSMISSION PARTS WAREHOUSE



01J & 0AN (Multitronic) In Line FWD CVT (Electronic Control)

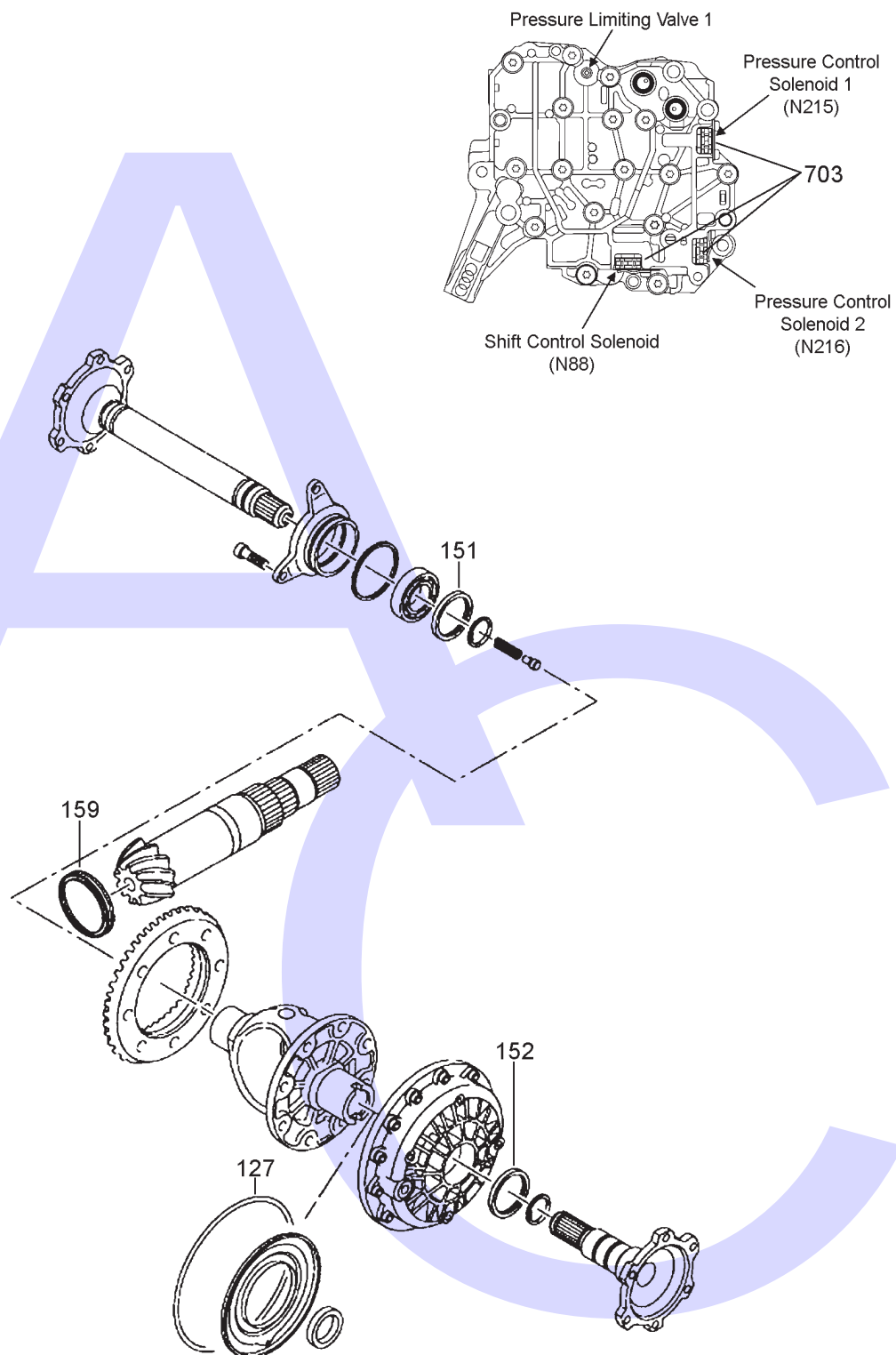


AUTOMATIC CHOICE



THE AUTOMATIC TRANSMISSION PARTS WAREHOUSE

E



Differential Assembly

01J & 0AN (Multitronic)

In Line FWD CVT (Electronic Control)



AUTOMATIC CHOICE



THE AUTOMATIC TRANSMISSION PARTS WAREHOUSE

ILL NO.	DESCRIPTION	YEARS	QTY	PART NO
KITS				
Kit	Overhaul Kit (Transtec) (Read Note Below).....	01-ON	1	01J.OHK02
Kit	Overhaul Kit (Aftermarket) (Read Note Below).....	01-ON	1	01J.OHK01
Kit	Overhaul Kit (Precision) (Read Note Below).....	01-ON	1	01J.OHK03
Important Note: These kits do not contain the forward clutch piston inner Teflon seal. Damaging this seal will make rebuild impossible. They also do not contain the forward clutch feed tube.				
GASKETS				
100C	Front Cover	01-ON	1	01J.GAS01
101C	Main Case.....	01-ON	1	01J.GAS02
102D	Rear Cover.....	01-ON	1	01J.GAS03
RUBBER COMPONENTS				
127E	Diff Cover 'O' Ring	01-ON	1	AR4.OR01
NI	'O' Ring Cooler Connector	01-ON	2	5HP19.OR06
METAL CLAD SEALS				
150A	Front Cover Seal.....	01-ON	1	01J.MCS01
151E	Drive Shaft R/Hand.....	01-ON	1	VW010.MCS03
152E	Drive Shaft L/Hand.....	01-ON	1	VW010.MCS03
153C	Entrainment Pump	01-ON	1	01J.MCS05
154D	Manual Shaft (30/22mm x 11.50mm x 12mm)	01-ON	1	01J.MCS03
155D	Oil Feed Tube Seal (23mm ID)	01-ON	1	01J.MCS07
156D	Oil Feed Tube Seal (12mm ID)	01-ON	5	01J.MCS06
157D	Case Connector (Round Type)	01-ON	1	01J.MCS08
157D	Case Connector (Oval Type)	01-ON	1	01J.MCS09
158D	Oil Pump	01-ON	1	01J.MCS10
159E	Double Lip Seal (102mm x 63.50mm x 9.50mm)	01-ON	1	01J.MCS02
PISTONS				
170A	Forward Clutch With Seal	01-ON	1	01J.PIS01
NI	Reverse Clutch (Part of 01J.COV01)	01-ON	1	01J.PIS02
SEALING RINGS				
CLUTCH KITS				
Kit	Friction & Steel Kit (Forward Clutch 7 frictions, 6 Steels) (Use with 3.0Ltr Petrol & 1.9Ltr, 2.5Ltr Diesel Only) (OEM Update) (Click here for More Info)	01-ON	1	01J.CK01
Kit	Friction & Steel Kit (Forward Clutch 6 frictions) (Use with 1.8Ltr, 2.0Ltr & 2.4Ltr Petrol Vehicles Only) (OEM) (Click here for More Info)	01-ON	1	01J.CK05
Kit	Friction & Steel Kit (OEM) (Reverse Brake).....	01-ON	1	01J.CK02

ILL NO.	DESCRIPTION	YEARS	QTY	PART NO
FRICTION PLATES				
Kit	Friction Plate Forward & Reverse (Alto) (Suits 6 Plate Clutches only).....	01-ON	1	01J.FRK51
250A	Forward Clutch (AM) (2.70mm, 6 Plate Clutch Only)	01-ON	6	01J.FRP02
250A	Forward Clutch (AM) (2.03mm, 7 Plate Clutch Only)	01-ON	7	01J.FRP03
251B	Reverse Clutch (OEM).....	01-ON	6	01J.FRP31
251B	Reverse Clutch (Alto).....	01-ON	6	01J.FRP01
STEEL PLATES				
Kit	Steel Plate (Alto) (Suits 6 Plate Clutches only).....	01-ON	1	01J.STK51
Kit	Forward Clutch Selective Steel Plates (OEM) (10 Plates, 2 Each Size Selective)	01-ON	1	01J.CK03
Kit	Reverse Brake Selective Steel Plates (OEM) (10 Plates, 2 Each Size Selective)	01-ON	1	01J.CK04
300A	Forward Clutch Selective (1.90mm Thick)	01-ON	AR	01J.STP01
	(2.15mm Thick)	01-ON	AR	01J.STP02
	(2.65mm Thick)	01-ON	AR	01J.STP03
	(2.90mm Thick)	01-ON	AR	01J.STP04
	(3.15mm Thick)	01-ON	AR	01J.STP05
301B	Reverse Brake Selective (1.90mm Thick)	01-ON	AR	01J.STP06
	(2.15mm Thick)	01-ON	AR	01J.STP07
	(2.65mm Thick)	01-ON	AR	01J.STP08
	(2.90mm Thick)	01-ON	AR	01J.STP09
	(3.15mm Thick)	01-ON	AR	01J.STP10
SPRINGS & CIRCLIPS				
430A	Circlip Kit, Input Drum to Cover (1 each 1.63mm, 1.72mm, 1.81mm & 1.90mm)	01-ON	1	01J.CIR01
437C	Circlip Kit, Primary Shaft to Rear Bearing (1.80mm - 1.95mm)	01-ON	1	01J.CIR02
FILTERS				
450C	Pick Up Filter.....	01-ON	1	01J.FIL01
450C	Pick Up Filte (High Oval Inlet)...	01-ON	1	01J.FIL03
451C	In Line Filter	01-ON	1	01J.FIL02
BUSHINGS				
THRUST WASHERS & BEARINGS				
604C	Shim Kit, Primary Shaft to Rear Bearing (1.20mm - 2.20mm)	01-ON	1	01J.SHI01
650C	Needle Bearing, Primary Drum (Front)	01-ON	1	01J.BE02
651C	Needle Bearing, Primary Drum (Rear).....	01-ON	1	01J.BE03
652D	Needle Bearing, Drawn Cup Open Ended (10mm x 14mm x 10mm)	01-ON	1	01J.BE05
690A	Front Cover Bearing (Ball Race)	01-ON	1	01J.BE01
691C	Bearing, Primary Drum (Rear) (Ball Race)	01-ON	1	01J.BE04

01J & 0AN (Multitronic)

In Line FWD CVT (Electronic Control)



AUTOMATIC CHOICE



THE AUTOMATIC TRANSMISSION PARTS WAREHOUSE

ILL NO.	DESCRIPTION	YEARS	QTY	PART NO
ELECTRICAL COMPONENTS				
700D	Secondary Pickup Sensor.....	01-ON	1	01J.ELE01
701D	Primary Pickup Sensor	01-ON	1	01J.ELE02
702D	Transmission ECU (01J, 0AN) (VIN Required)	01-ON	1	01J.ELE21
702D	Transmission ECU (Repair)	01-ON	1	01J.ELE31
703E	Solenoid, N88, N215, N216 (Sonnax® Click here for Info) ...	01-ON	1	01J.SOL01
VALVE BODY PARTS				
750D	Valve Body & Oil Pump (01J) (VIN Required)	01-ON	1	01J.VBxx
Kit	Safety Valve, Oversize Requires AG4.VA05 Universal Fixture & Toolkit 01J.VA02 (Sonnax® Click here for Info) ...	01-ON	1	01J.VA01
Kit	Toolkit for 01J.VA01 (Sonnax®)	01-ON	AR	01J.VA02
Kit	Clutch Control Valve, Oversize (No Notches) Requires AG4.VA05 Universal Fixture & Toolkit 01J.VA05 (Sonnax® Click here for Info) ...	01-ON	1	01J.VA03
Kit	Clutch Control Valve, Oversize (With Notches) Requires AG4.VA05 Universal Fixture & Toolkit 01J.VA05 (Sonnax® Click here for Info) ...	01-ON	1	01J.VA04
Kit	Toolkit for 01J.VA03 & 01J.VA04 (Sonnax®)	01-ON	AR	01J.VA05
Kit	Volumetric Flow Rate, Oversize Requires AG4.VA05 Universal Fixture & Toolkit 01J.VA07 (Sonnax® Click here for Info) ...	01-ON	1	01J.VA06
Kit	Toolkit for 01J.VA06 (Sonnax®)	01-ON	AR	01J.VA07
Kit	VSTV Pilot Pressure Valve, Oversize (Late) Requires AG4.VA05 Universal Fixture & Toolkit 01J.VA10 (Sonnax® Click here for Info) ...	01-ON	1	01J.VA08
Kit	VSTV Pilot Pressure Valve, Oversize (Early) Requires AG4.VA05 Universal Fixture & Toolkit 01J.VA10 (Sonnax® Click here for Info) ...	01-ON	1	01J.VA09
Kit	Toolkit for 01J.VA08 & 01J.VA09 (Sonnax®)	01-ON	AR	01J.VA10
Kit	UV Adjustable End Plug (Sonnax® Click here for Info) ...	01-ON	1	01J.VA11
Kit	UV Reduction Valve Kit, Oversized Requires AG4.VA05 Universal Fixture & Toolkit 01J.VA13 (Sonnax® Click here for Info) ...	01-ON	1	01J.VA12
Kit	Toolkit for 01J.VA12 (Sonnax®)	01-ON	AR	01J.VA13
HARD PARTS				
800A	Front Cover Assy (With Bearing & Rev Piston)	01-ON	1	01J.COV01
802B	Tube, Forward Clutch Feed Pipe (With Sealing Ring)	01-ON	1	01J.TU01
802B	Tube, Forward Clutch Feed Pipe (Modified Type)	01-ON	1	01J.TU03
803C	Input Drum & Cover Assy (7 Plate). 01-ON		1	01J.DRU32
803C	Input Drum & Cover Assy (7 Plate A6 2.0, 2.7 Diesel) Codes LDQ, LDU, LDV	01-ON	1	0AN.DRU31
804C	Drive Chain, Early Style (15mm Thick) (Use With 01J.RET03/04)	01-ON	1	01J.CH01

ILL NO.	DESCRIPTION	YEARS	QTY	PART NO
HARD PARTS Cont...				
804C	Drive Chain, Late Style (13mm Thick, 0AN) (Fits Box Codes: HJB, KTG, JZK, HSB) (Use With 01J.RET01/02)	07-ON	1	01J.CH02
805C	Chain Guide (13mm, Front) (Use With 01J.CH02)	01-ON	1	01J.RET02
805C	Chain Guide (15mm, Front) (Use With 01J.CH01)	01-ON	1	01J.RET04
806C	Chain Guide (13mm, Rear) (Use With 01J.CH02)	01-ON	1	01J.RET01
806C	Chain Guide (15mm, Rear) (Use With 01J.CH01)	01-ON	1	01J.RET03
808C	Entrainment Pump W./Extra Lug (Need Box Code Click for info) Will also Require 01J.MCS05 ...	01-ON	1	01J.PUM04
808C	Entrainment Pump W.O./Extra Lug (Need Box Code Click for info) Will also Require 01J.MCS05 ...	01-ON	1	01J.PUM05
808C	Entrainment Pump A4 (Codes: HJB, KTG, JZK, KYV) A6 (Codes: KSV, KEV, KSW, KED, KRW) Will also Require 01J.MCS05 ...	01-ON	1	01J.PUM06
809C	Breather Pipe	01-ON	1	01J.TU02
813C	Primary Drum & Shaft Assembly (51 Teeth 4 ID Grooves) (Fits A4 Codes: FSG, FSK, FSL, FYU, FZH, GEC, GHR, GHY, GHZ, GJA, GWC, GWN, GWW, GWX, HPP, HPQ, HPR, HSA, JBZ, JLC, JLD, JLE, JZT) (Fits A6 Codes: FSC, FSA, FWL, GHD, GHF, GHP, GHQ, GJS, GJT, HPL, HPM, HPN, HSN, HSQ, HSR, HSS, JBX, JLF, JLG, JLH, JQL, JZJ, KYQ, KYR, LDP, LDQ)	01-ON	1	01J.DRU01
813C	Primary Drum & Shaft Assembly (54 Teeth 1 ID Groove) (Fits A4 Codes: FSD, GEB, GHW, GZF, FRC, FYX, GHT, GWQ, GZM, HBD, GZL, HED, JZQ, KTP, LDJ) (Fits A6 Codes: FRW, FRY, GLY, GHK, GWZ, GWG, GAC)	01-ON	1	01J.DRU02
813C	Primary Drum & Shaft Assembly (57 Teeth 2 ID Grooves) (Fits A4 Codes: EVE, FSF, GGS, GHV, GHU, HBH, GWU, HCP, HAY, GWS, HBC, GWR, FSE, HBE, HBG, HHD, JZM)	01-ON	1	01J.DRU03
813C	Primary Drum & Shaft Assembly (29 Teeth Small Gear, 36 Teeth Large Gear) (Fits A4 Codes: GYJ, HEJ, HEK, HHF, JZT, JZU) (Fits A6 Codes: GYZ, HSZ, JFL, JQL, JZJ)	01-ON	1	01J.DRU05
813C	Primary Drum & Shaft Assembly (For 0AN Transmission A6 2.0, 2.7 Diesel) (Fits A6 Codes: LDQ, LDU, LDV)	08-ON	1	0AN.DRU01
814C	Tube, Reverse Clutch Pressure Feed	01-ON	1	01J.TU04
816C	Reverse Clutch Oil Baffle	01-ON	1	01J.BA01
SPECIAL ITEMS				
Oil	Special Fluid Required For 01J & 0AN Transmissions 1 Litre Bottle	01-ON	AR	01J.OIL01
	20 Litre Canister	01-ON	AR	01J.OIL02
Note: Initial filling approx. 7.5 Ltr. Oil change, 4.5 - 5.0 Ltr.				
906C	Threaded Drain Plug	00-ON	1	01J.NUT01
NI	Dual Mass Flywheel (1.9L TDi, 2.0L TDi)	00-ON	1	01J.FLY01

01J & 0AN (Multitronic)

In Line FWD CVT (Electronic Control)



AUTOMATIC CHOICE



THE AUTOMATIC TRANSMISSION PARTS WAREHOUSE

ILL NO.	DESCRIPTION	YEARS	QTY	PART NO
SPECIAL ITEMS Cont...				
NI	Dual Mass Flywheel (Audi A4/A6 2.5L TDi)	01-06	1	01J.FLY02
NI	Dual Mass Flywheel (Audi A4 2.0L TFSi).....	11/04-03/09	1	01J.FLY03
NI	Dual Mass Flywheel (Audi A6 2.0L TDi).....	04-11	1	01J.FLY04
TOOLS & MANUALS				
NI	ATSG Repair Manual.....	01-ON		01J.MAN01
NI	ATSG Technicians Guide CD....	01-ON		01J.MAN02
Click here to view special tools for this transmission				

ILL NO.	DESCRIPTION	YEARS	QTY	PART NO